

Health Insurance Coverage and Income

	<u>State</u>	<u>National</u>	<u>Top State</u>	<u>Bottom State</u>
Percent of population with health insurance coverage				
2002-2003	84.4%	85.1%	92.1%	75.3%
2005-2006	84.9%	84.9% ***	91.8%	76.1%
Percentage change	0.6%	-0.2%		
Percent of employers offering health insurance to employees				
2003	56.5%	56.2%	86.2%	42.2%
2005	56.7%	56.3%	89.6%	38.6%
Percentage change	0.4%	0.2%		
Percent of employees enrolling in health insurance offered by employers				
2003	83.2%	80.3%	86.0%	73.4%
2005	79.3%	79.6%	86.6%	71.3%
Percentage change	-4.7%	-0.9%		
Percent of premiums contributed by employees enrolled in employer-sponsored coverage				
2003	15.8%	17.4%	25.0%	8.3%
2005	17.9%	18.1%	24.5%	9.0%
Percentage change	13.3%	4.0%		
Percent of working adults spending 20% or more of income on out-of-pocket medical expenses				
2001	5.7%	4.8%	9.3%	2.4%
2004	8.4% ***	8.0% ***	13.8%	5.0%
Percentage change	47.4%	66.7%		
Medicaid enrollment as a percent of population under 200% FPL				
2002	37.3%	43.2%	86.0%	23.4%
2006	39.0% ^	46.4% ^	69.1%	23.5%
Percentage change	4.5%	7.4%		
Percent of population at or above 200% FPL				
2002-2003	66.3%	69.5%	80.1%	56.8%
2005-2006	65.7%	68.7% **	81.3%	57.4%
Percentage change	-0.9%	-1.1%		

System-Wide Health Care Resources

	<u>State</u>	<u>National</u>	<u>Top State</u>	<u>Bottom State</u>
Physicians per 100,000 population				
2002	246	272	690	172
2006	295 ^	321 ^	881	209
Percentage change	20.0%	18.1%		
Hospital beds per 1,000 population				
2001	2.9	2.9	5.9	1.9
2005	2.7 ^	2.7 ^	6.1	1.7
Percentage change	-6.9%	-6.9%		
Percent of population with a personal doctor or health care provider				
2003	80.7%	79.6%	89.5%	65.3%
2006	78.1% **	80.0%	89.2%	68.2%
Percentage change	-3.1%	0.5%		
Percent of population that could get medical care when needed				
2003	85.1%	87.1%	93.7%	80.5%
2006	84.0%	86.7%	92.6%	81.0%
Percentage change	-1.3%	-0.4%		
Safety-Net Resources				
BPHC-supported clinics per 100,000 population under 200% FPL				
2002	3.1	5.2	52.5	1.5
2005	3.8 ^	6.2 ^	61.7	2.2
Percentage change	23.9%	18.8%		
Percent of hospitals publicly owned by state or local governments				
2001	28.8%	23.6%	67.5%	1.0%
2005	27.8% ^	22.5% ^	70.8%	1.0%
Percentage change	-3.5%	-4.5%		
Patients served by FQHCs as a percent of population under 200% FPL				
2003	9.9%	13.8%	42.9%	5.0%
2006	11.4% ^	16.0% ^	46.6%	7.7%
Percentage change	15.1%	15.9%		

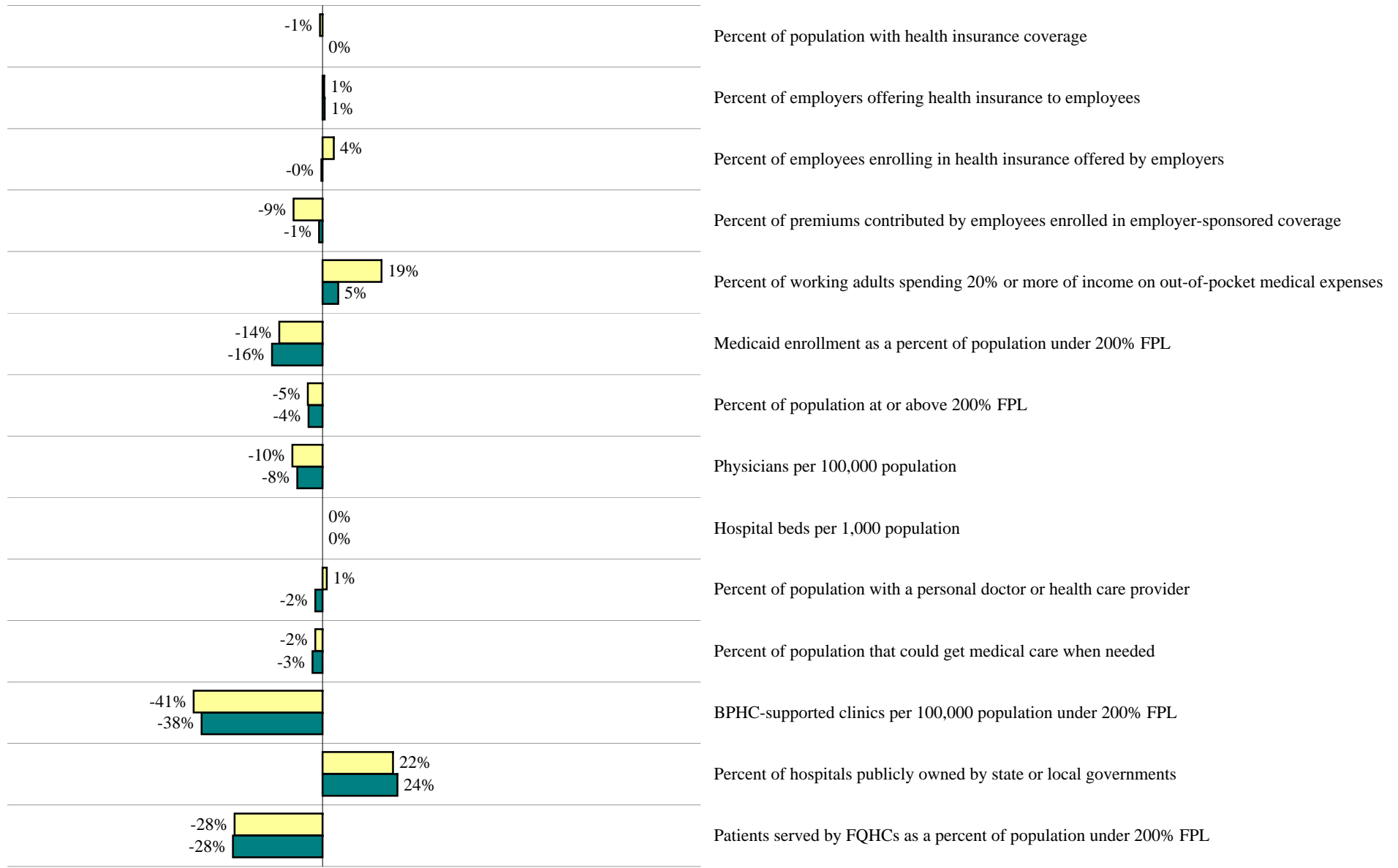
Statistically significant difference between time periods at:

* = 95% level; ** = 99% level; *** = 99.9% level

^ No significance testing was done on this indicator

State Health Access Profile: North Carolina

% Difference from U.S. National



■ Access Profile Edition I ■ Access Profile Edition II
 (Refer to data documentation for source and date information)